

DEFINING A DISTRICT-SCALE GOLD SYSTEM
OVERPRINTING EARLIER POLYMETALLIC
MINERALIZATION

ISHKÖDAY

6 KM × 2.5 KM STRUCTURALLY CONTROLLED
CORRIDOR

LAURION  **ION**

MINERAL EXPLORATION INC.

TSX.V:LME | OTCID:LMEFF | FYSE:5YD

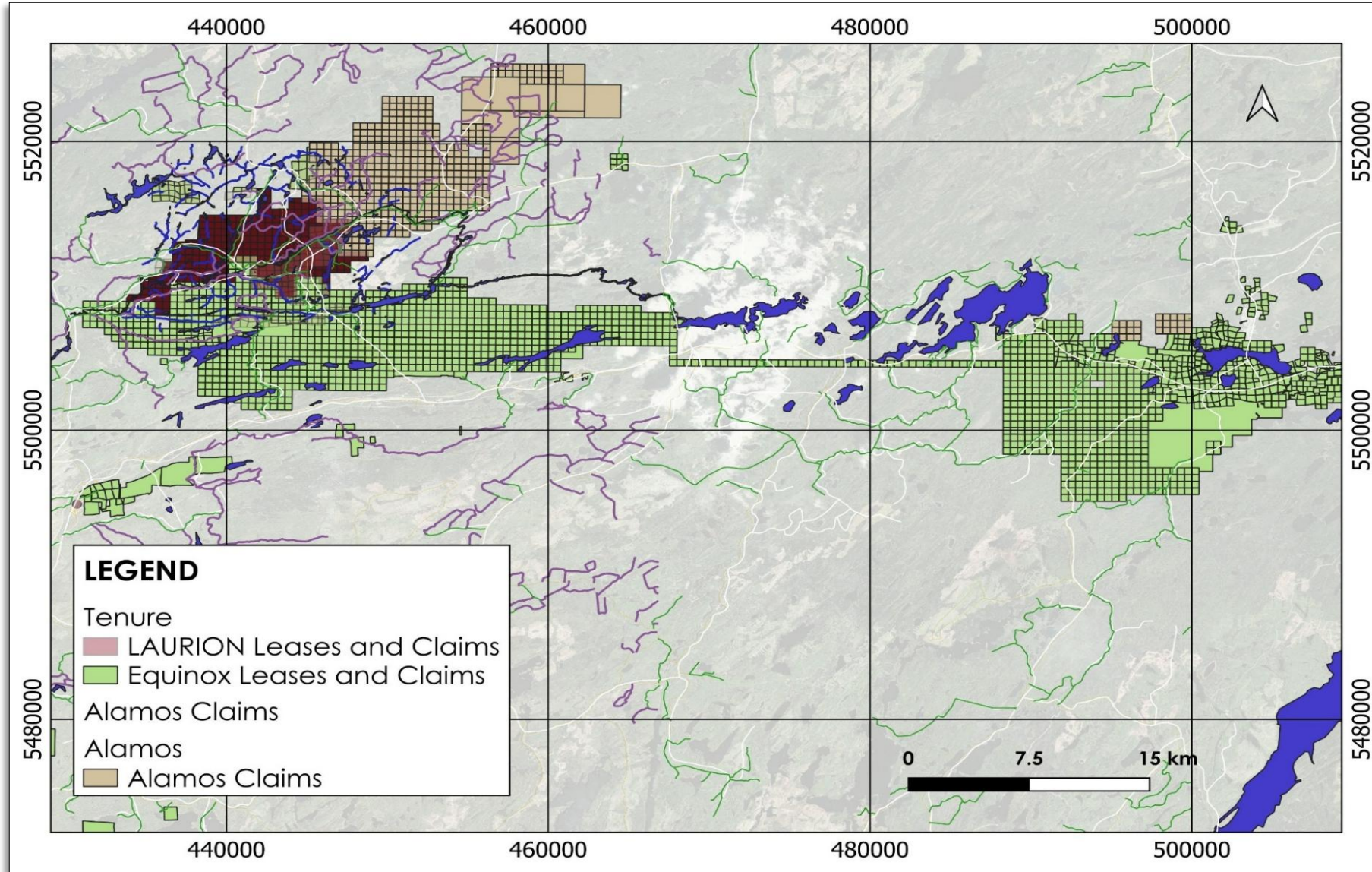
ISHKŌDAY I TOP TIER JURISDICTION

Beardmore-
Geraldton/Onaman -
Tashota
Greenstone Belt

Proven gold endowment
Active regional operators



ISHKÖDAY | A PROVEN DISTRICT OF ACTIVE PEERS



ISHKŌDAY | WHERE GEOLOGY MEETS SCALE



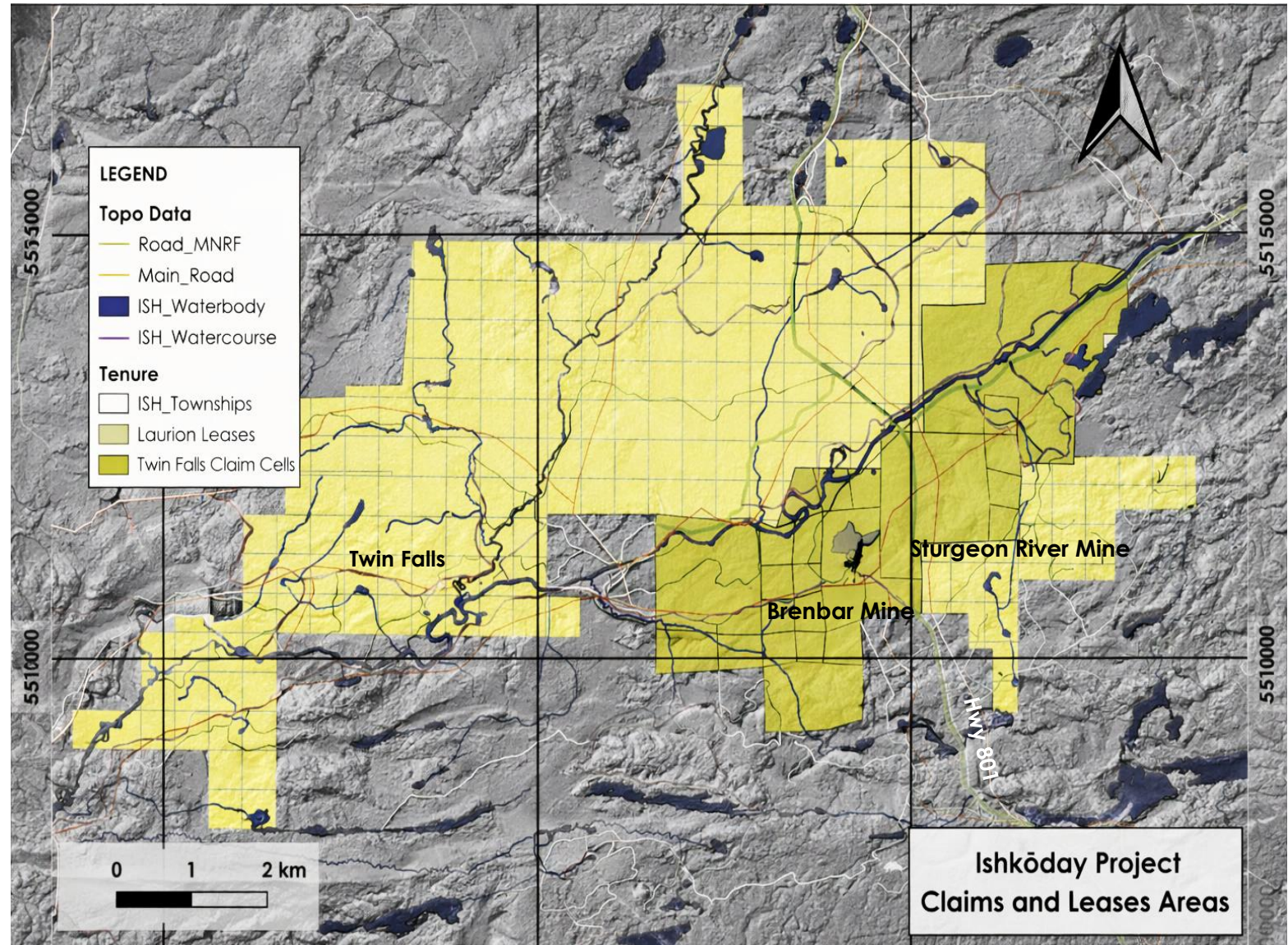
EXISTING REGIONAL INFRASTRUCTURE

Existing infrastructure provides practical access across the corridor



DISTRICT SCALE AND STRATEGIC LOCATION

Ishkōday is not a collection of isolated targets — **it is a coherent, district-scale system.**

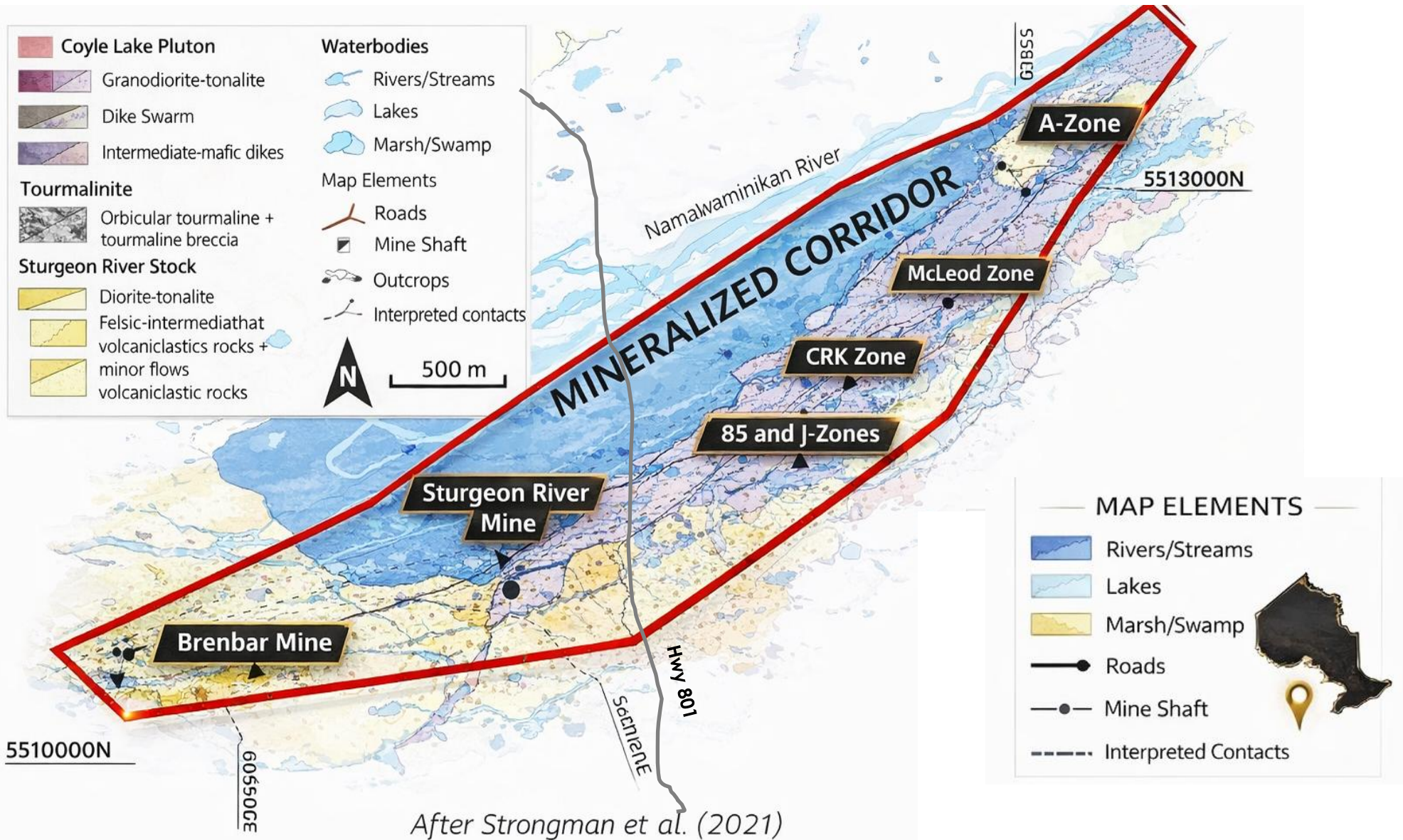


ISHKŌDAY | STEWARDSHIP AND DISCIPLINED ADVANCEMENT



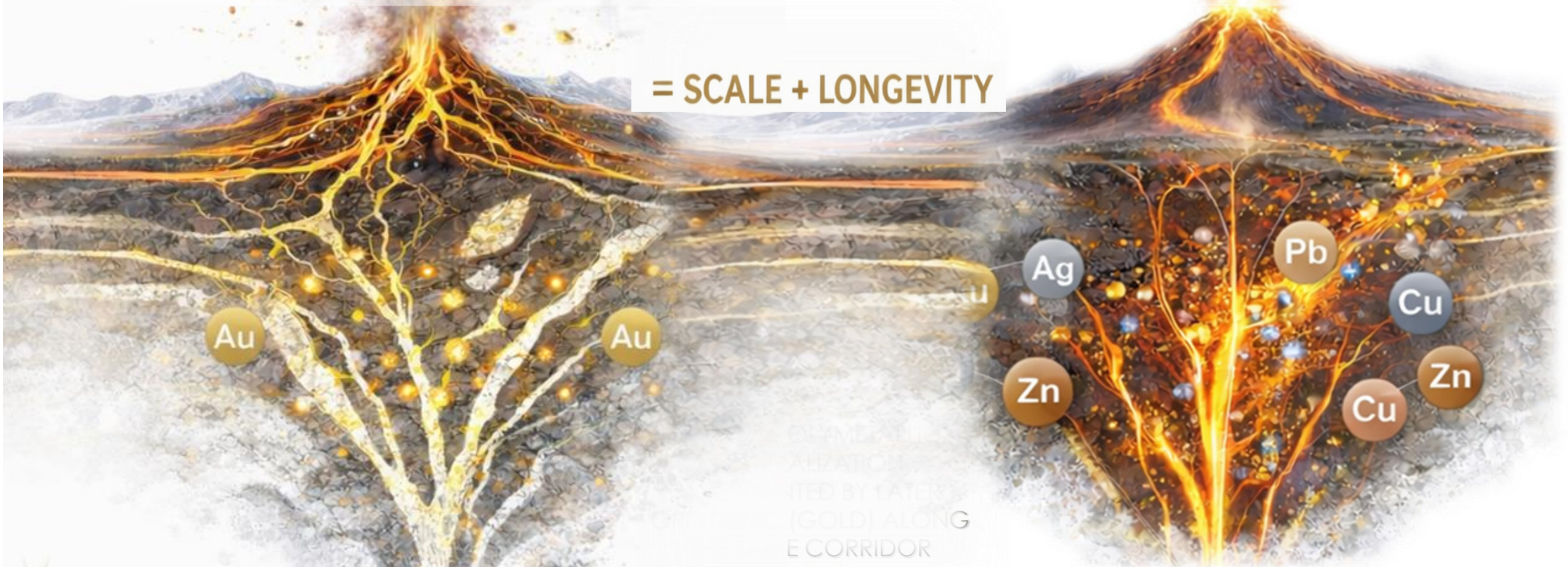
- **~100,000 m drilled**
- **Two past-producing gold mines** – Sturgeon River Mine (**17 g/t Au**) Brenbar (**20 g/t Au**)
- **57 km² contiguous district-scale gold system**
- **6 km × 2.5 km structurally controlled mineralized corridor**
- **Advanced permitting pending**, for processing of **surface stockpile processing**
- Work programs building toward **NI 43-101 technical reporting (potential MRE)** as milestones are met

ISHKÖDAY I MINERALIZED CORRIDOR



After Strongman et al. (2021)

ISHKŌDAY | DUAL MINERALIZING EVENTS



Early "Ishkōday" Mineralization

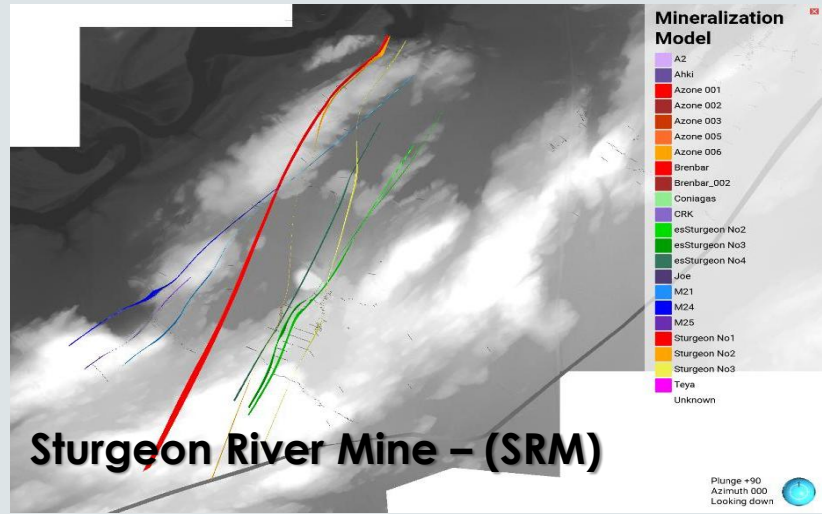
- 1 Gold-(Silver-Zinc-Copper) Mineralization
- 2 Epithermal Style
- 3 Syn-volcanic Origin

CONCEPTUAL SCHEMATIC

Late "Sturgeon River" Mineralization

- 1 Gold Mineralization
- 2 Orogenic Style
- 3 Syn-tectonic Origin

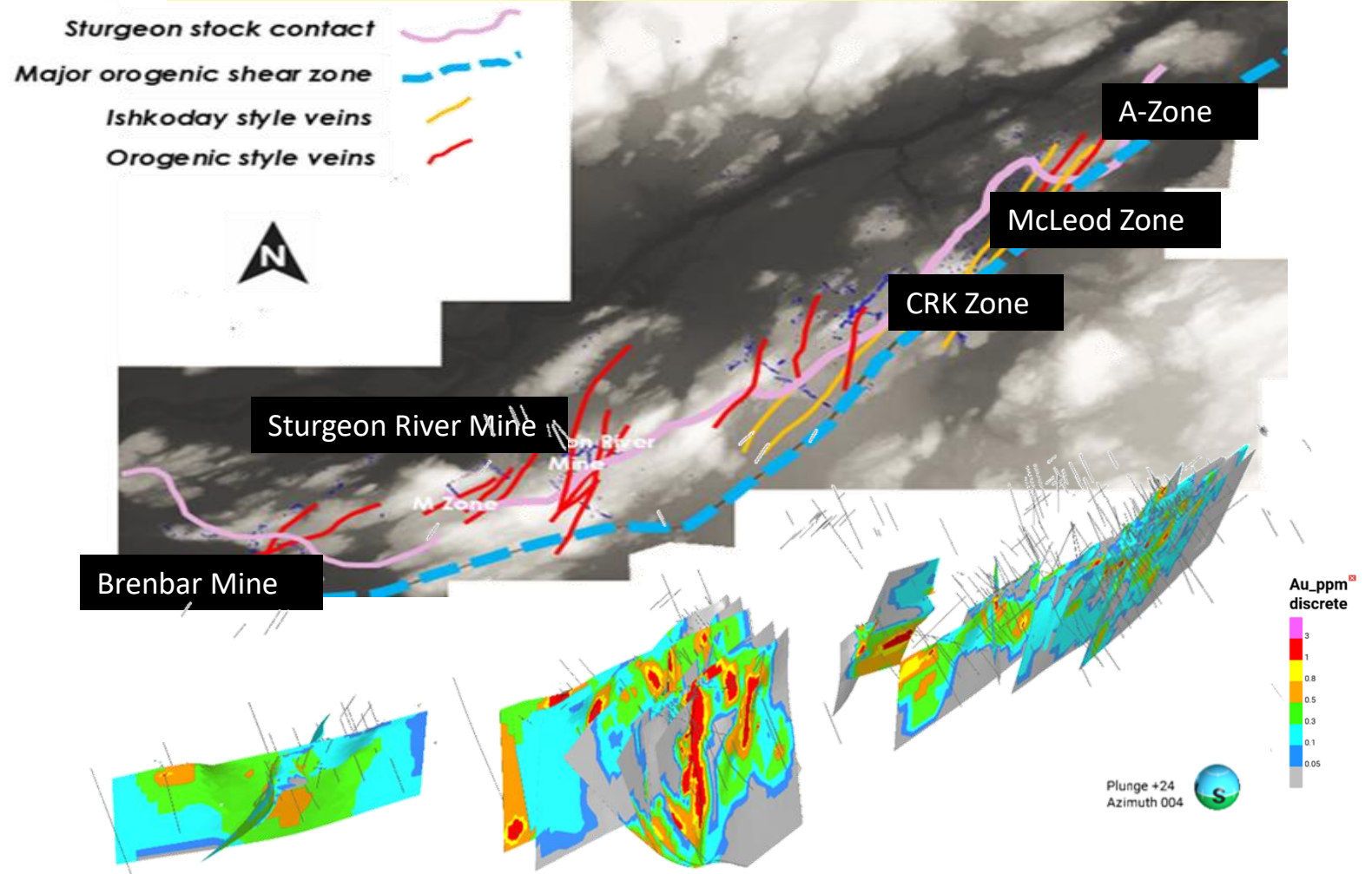
DEM WITH GOLD-BEARING STRUCTURAL ARCHITECTURE



- **9 gold-bearing** structural trends identified - SRM
- **22 structures** modeled in 3D
- **Continuity demonstrated** over 6 km X 2.5 km corridor

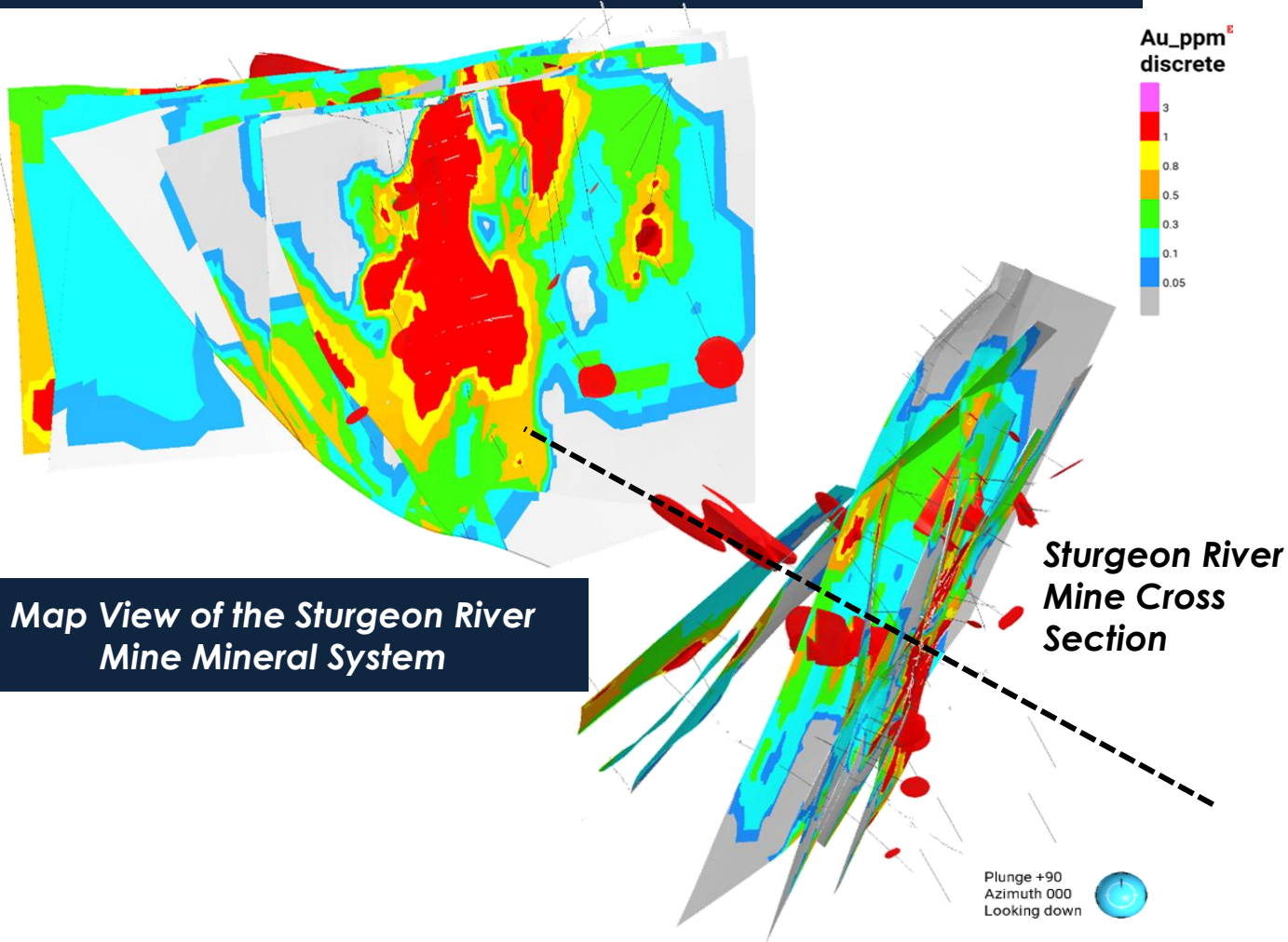
KEY MINERALIZATION ZONES – ISOMETRIC AND PLAN VIEWS

Brenbar, Sturgeon River – A-Zone, CRK Corridor



ADVANCING MODELLING OF STURGEON RIVER MINE

Long Section View of the Sturgeon River Mine Mineral System



Map View of the Sturgeon River Mine Mineral System

Sturgeon River Mine Cross Section

Plunge +90
Azimuth 000
Looking down

STURGEON RIVER MINE — HIGH-GRADE GOLD INTERCEPTS

LME24-052 5.25 m @ 7.29 g/t Au

LME23-032 3.60 m @ 29.5 g/t Au,
incl. 0.55 m @ 186 g/t

LME24-043 7.00 m @ 2.67 g/t Au
incl. 5.1m at 3.57 g/t Au
and 2.35m at 5.73 g/t Au

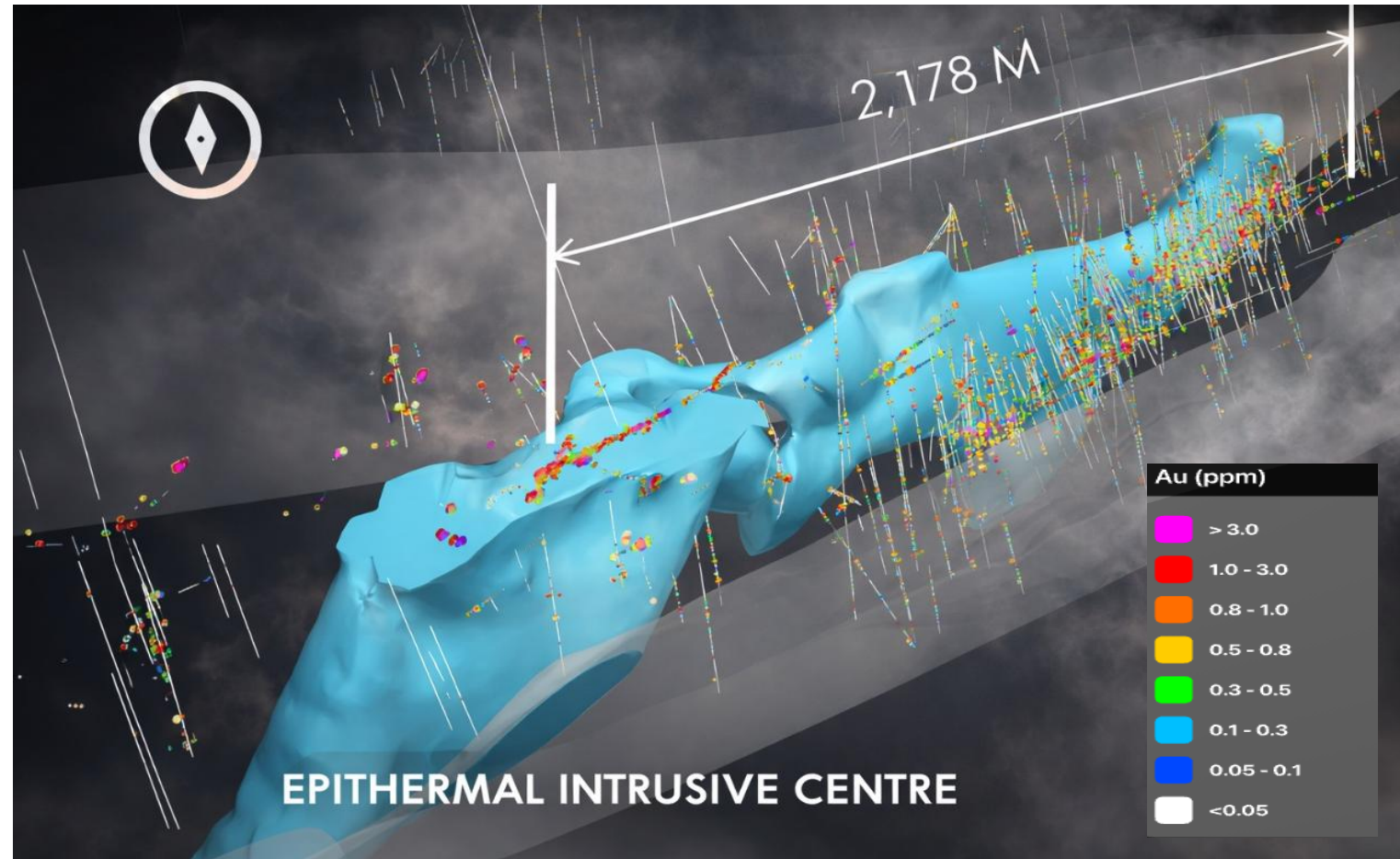
LME25-069 0.50 m @ 15.35 g/t Au

LME25-067 0.70 m @ 11.40 g/t Au

NINE Gold-Bearing Structural Trends Identified - SRM

ISHKŌDAY | GOLD - BASE METAL CORRIDOR (STRUCTURAL EXPRESSION)

- ~2.1 km strike length - Open at depth
- Gold associated with Ag-Zn-Cu-Pb sulphide mineralization along the corridor
- Sulphide mineralization developed along structurally controlled zones
- Fold hinges and shear intersections provide predictable but complex targeting vectors



Gold and base-metal mineralization focused along folds and shear zones within the corridor

ISHKŌDAY | SELECT INTERCEPTS (MULTIPLE ZONES)



LBX12-010
12.84 m 3.31 g/t Au + 3.72% Zn

LBX20-003
63.93 m 0.58 g/t Au, 1.92% Zn, 0.11% Cu
Including 16.16 m @ 1.12 g/t Au, 5.00% Zn

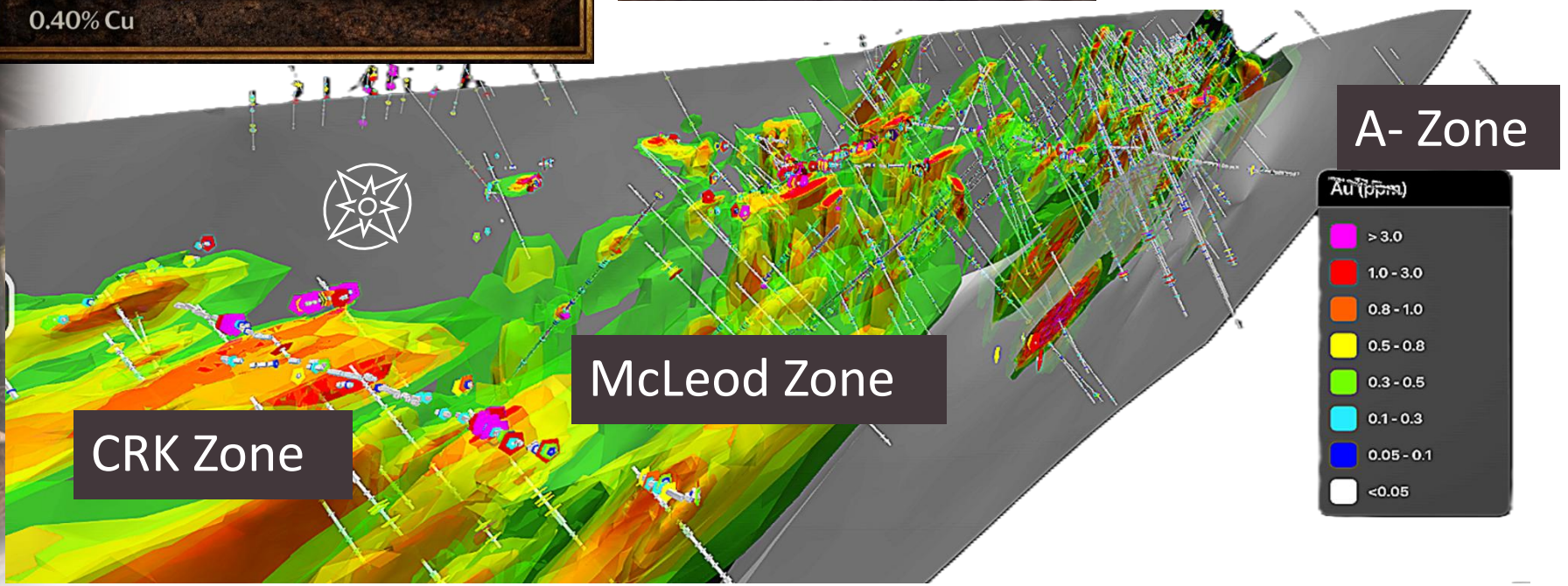
LBX12-006
1.25 m 4.24 g/t Au, 40.06 g/t Ag, 10.52% Zn,
0.40% Cu

LBX25-0098
1.50m
10.38 g/t Au,
15.73 g/t Ag, 0.70% Zn

incl. 0.70m
22.10 g/t Au,
32.10 g/t Ag, 1.39% Zn

LBX25-0099
8.15m
0.57 g/t Au,
12.23 g/t Ag, 0.89% Zn

incl. 0.75m
3.62 g/t Au,
57.20 g/t Ag, 5.22% Zn



PERMITTING AND RESPONSIBLE ADVANCEMENT

- **Permitting underway** for surface stockpile processing
- **Baseline studies complete** — ready for next approvals
- **First Nations agreements active** — strong engagement in place
- **Stewardship embedded** — monitoring + compliance executed

LAURION has positioned Ishkōday as a responsibly advanced project with clear permitting pathways and strong community relationships.

LAURION | STEWARDSHIP AND OVERSIGHT

Board of Directors



Cynthia Le Sueur-Aquin
President and CEO



Michael Burmi
Director



Jonathan Covello
Director



Vikram Jayaraman
Director.



Tyler Dilney
CFO



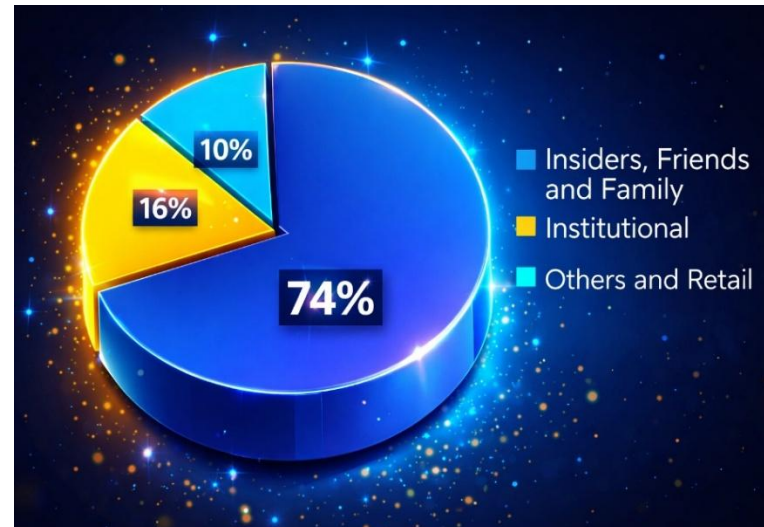
Pierre-Jean Lafleur P.Eng

Qualified Person

TREASURY STRENGTH

\$6.0M	Current Treasury Position Cash
\$1.5M	Flow-Through
\$11.8M	Reserve Assessment Credits (Ishkōday)

OWNERSHIP STRUCTURE



CAPITAL STRUCTURE

Shares Outstanding	~278,716,413
Options Outstanding	~3,637,244
Warrants Outstanding	~2,511,258
Fully Diluted Shares	~284,864,915

“SKIN IN THE GAME”

CEO Ownership - 30 million shares ~10% of outstanding shares

- Demonstrates **absolute confidence** in company trajectory
- Alignment between **leadership and shareholders**
- Strong **personal investment** ensures accountability

‘Alignment. Accountability. Active’

LAURION

THE CORPORATE ADVANTAGE

LAURION vs the AVERAGE TSXV JUNIOR



TIER-1 ONTARIO
JURISDICTION ✓



DISTRICT-SCALE
LAND POSITION ✓



EXISTING
INFRASTRUCTURE ✓



PERMITTING
UNDERWAY ✓



CLEAN CORPORATE
STRUCTURE ✓



STRONG
TREASURY ✓

EXPLORATION REALITY CHECK

- ~1 in 10,000 prospects becomes a mine
- ~1 in 2 *real discoveries* eventually get mined
- Senior Producers don't buy "ideas" — they buy **de-risked optionality**

LME's objective is not to build a mine itself — it is to prove a *mineable district*.

That's an important distinction.



CAUTIONARY STATEMENTS

Disclaimer

Certain statements contained in this presentation may constitute forward-looking statements. These statements relate to future events or LAURION's future performance. All statements, other than statements of historical fact, may be forward-looking statements. Forward-looking statements are often, but not always, identified by the use of words such as "seek", "anticipate", "plan", "continue", "estimate", "expect", "may", "will", "project", "predict", "propose", "potential", "targeting", "intend", "could", "might", "should", "believe", "budgeted", "scheduled", "forecasts", and similar expressions or variations (including negative variations). These statements involve known and unknown risks, uncertainties and other factors that may cause actual results or events to differ materially from those anticipated in such forward-looking statements.

LAURION believes that the expectations reflected in those forward-looking statements are reasonable, but no assurance can be given that these expectations will prove to be correct and such forward-looking statements included in this presentation should not be unduly relied upon by investors as actual results may vary.

Forward-Looking Statements

These forward-looking statements involve risks and uncertainties relating to, among other things, results of exploration activities, uninsured risks, regulatory changes, defects in title, availability of materials and equipment, changes in commodity prices, actual performance of facilities, equipment and processes relative to specifications and expectations and unanticipated environmental impacts on operations. These statements speak only as of the date of this presentation and are expressly qualified, in their entirety, by this cautionary statement. LAURION undertakes no obligation to update any forward-looking statement or information to reflect information, events, results, circumstances or otherwise after the date of which such statement is made or to reflect the occurrence of unanticipated events, except as required by law. This information contained in this presentation does not constitute a general offer to the public, or a general solicitation from the public of offers, to subscribe for or purchase any securities of the Company in the United States or Canada. This presentation has not been filed with the United States Securities and Exchange Commission, the Ontario Securities Commission or any other securities commission or regulatory authority in the United States or in Canada. No securities regulatory authority has expressed an opinion about the Company or its securities, or passed on the accuracy or adequacy of this presentation, and it is an offence to claim otherwise.

Qualified Person

The technical information in this Corporate PowerPoint has been prepared in accordance with Canadian regulatory requirements and has been reviewed and approved by Pierre-Jean Lafleur, P.ENG., a consultant to LAURION, and a "qualified person" within the meaning of National Instrument 43-101.

ONE FOCUS - ONE PROJECT

LAURION

MINERAL EXPLORATION INC.



Follow us on

LinkedIn



Follow us on
Instagram



TSX.V:LME | OTCID:LMEFF | FYSE:5YD